

## **ATTACHMENT 19**

### **Hazards**


# Coastal Erosion

Coastal Erosion is based on FEMA Flood Zones VE, coastal flood with velocity (wave action).

Feature subject to Coastal Erosion.

Parcels	1152
Structures	466
Schools	0
Fire Stations	0

Value of improvements based on  
2020 assessment roll: \$356,163,360

 Coastal Erosion - FEMA Flood Hazard Areas VE



# Earthquake Faults



January 6, 2025

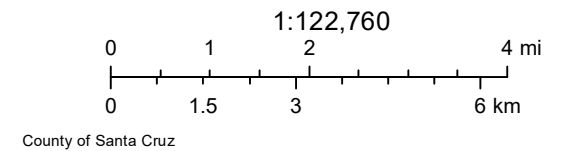
## State Highways

— State Highways

## Mapped County and State Fault Zones

CFZ

SFZ





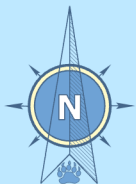
# Fire Hazard Severity Zones

The FHSZ data was created by CAL FIRE's Fire and Resource Assessment Program (FRAP) using data and models describing development patterns, estimated fire behavior characteristics based on potential fuels over a 30-50 year time horizon. The hazard area on this map includes Very High, High, and Moderate areas.

Features in Very High, High and Moderate Fire Hazard Severity Zones.

Parcels	35,956
Structures	36,320
Schools	30
Fire Stations	22

Value of improvements based on 2020 assessment roll: \$6,224,400,228





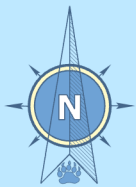
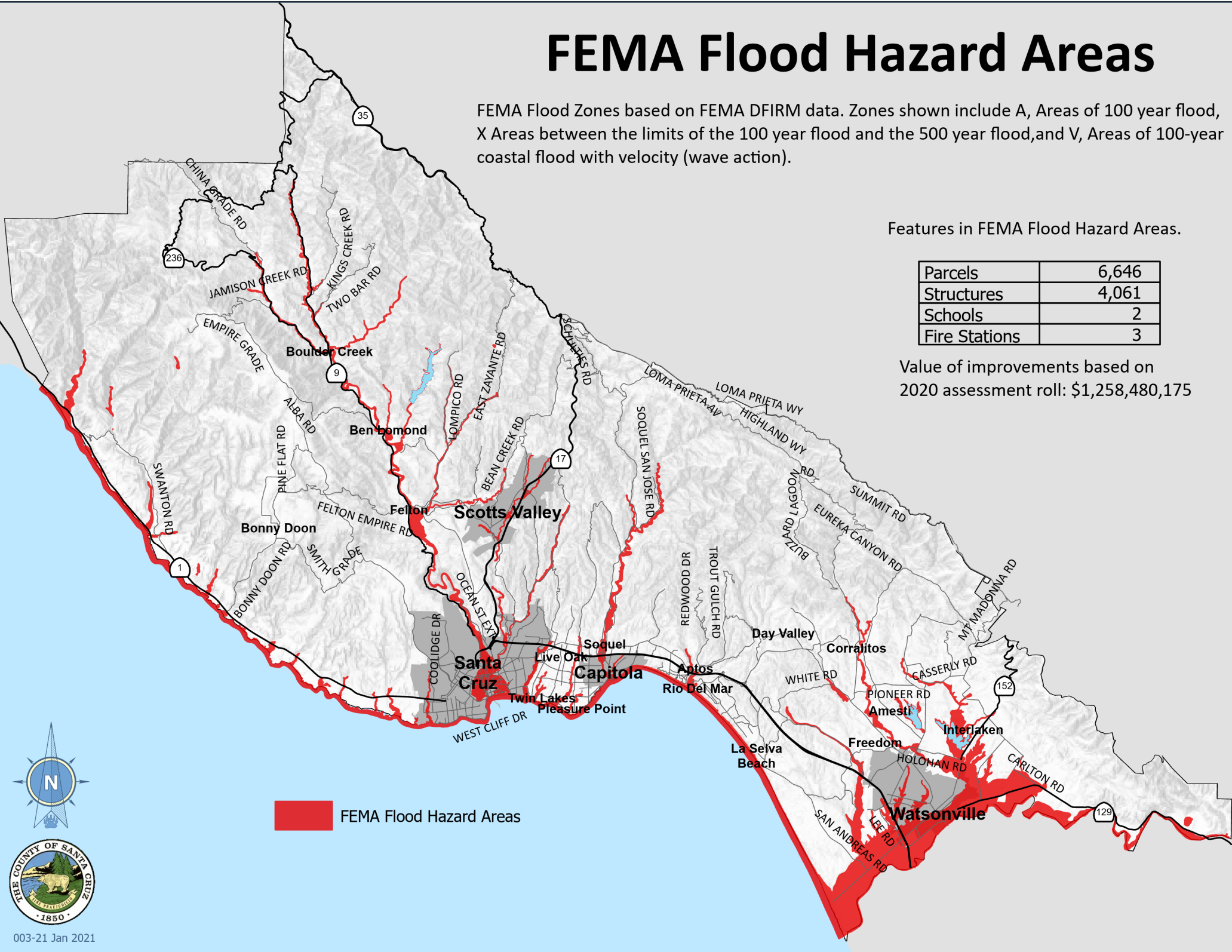
# FEMA Flood Hazard Areas

FEMA Flood Zones based on FEMA DFIRM data. Zones shown include A, Areas of 100 year flood, X Areas between the limits of the 100 year flood and the 500 year flood, and V, Areas of 100-year coastal flood with velocity (wave action).

Features in FEMA Flood Hazard Areas.



Parcels	6,646
Structures	4,061
Schools	2
Fire Stations	3

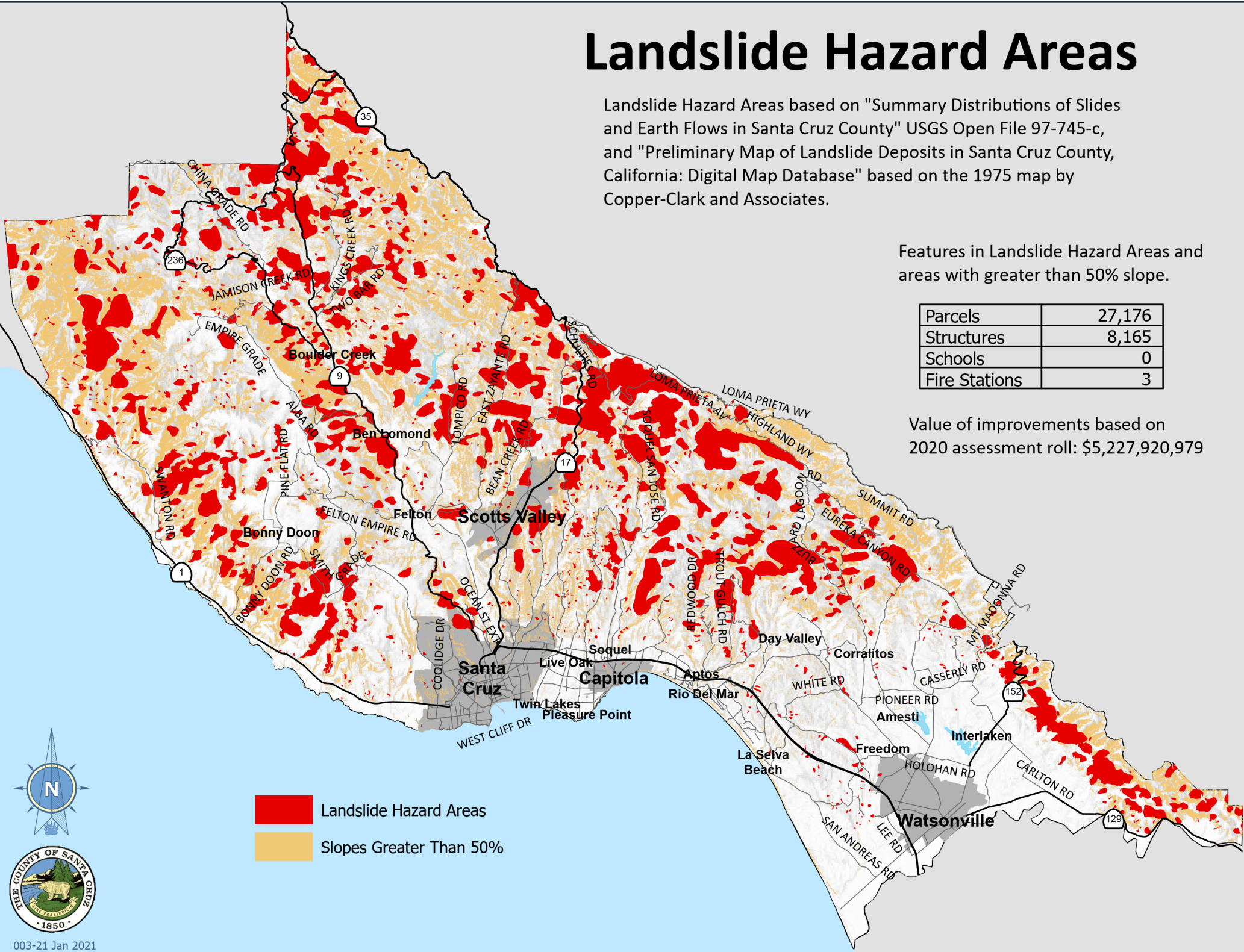
Value of improvements based on  
2020 assessment roll: \$1,258,480,175



Landslide Hazard Areas based on "Summary Distributions of Slides and Earth Flows in Santa Cruz County" USGS Open File 97-745-c, and "Preliminary Map of Landslide Deposits in Santa Cruz County, California: Digital Map Database" based on the 1975 map by Copper-Clark and Associates.

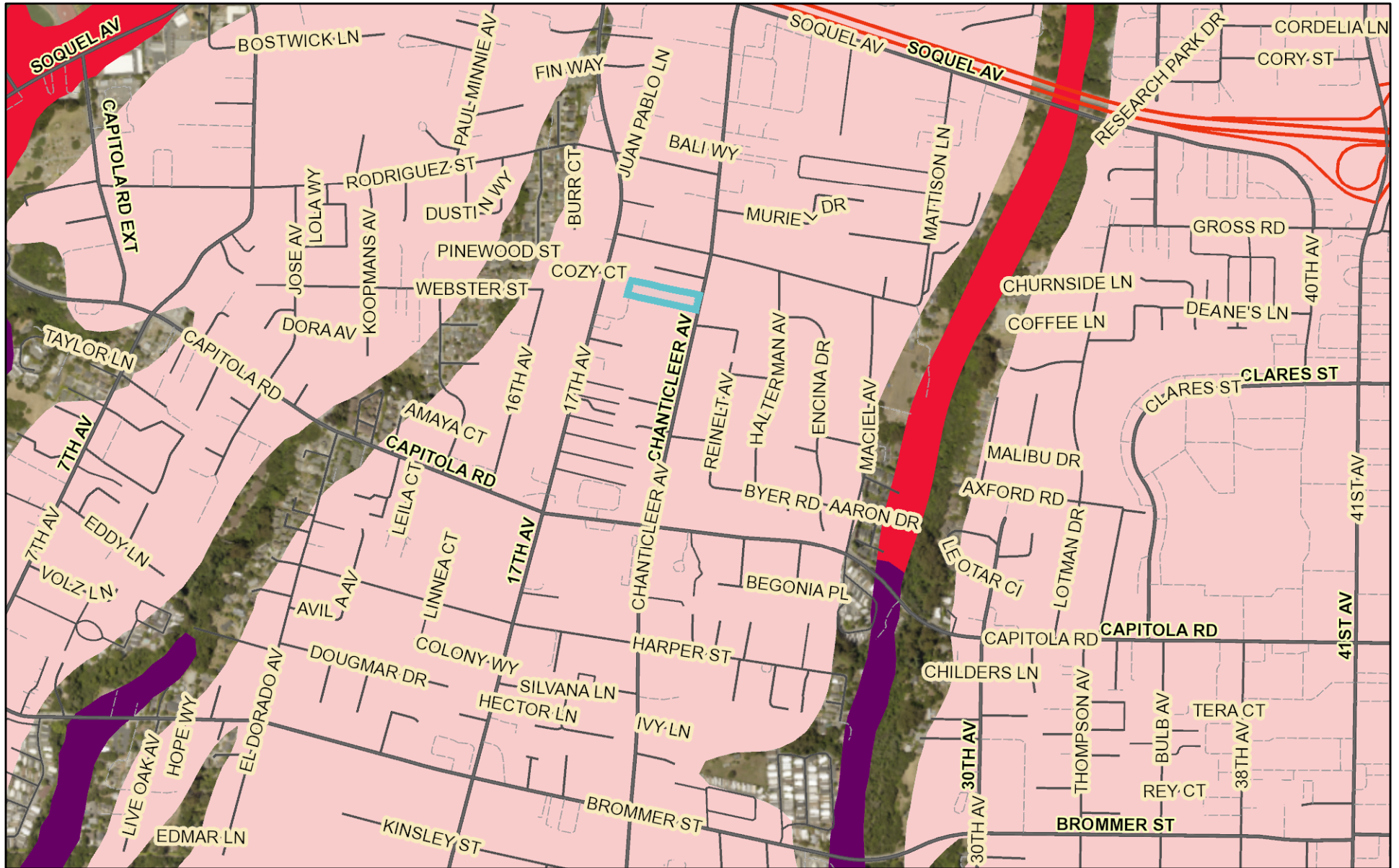
Parcels	27,176
Structures	8,165
Schools	0
Fire Stations	3

 Landslide Hazard Areas  
 Slopes Greater Than 50%





# Liquefaction Hazards



January 6, 2025

## Major Roads

— Major Roads

## Liquefaction - Liquefiable Soils

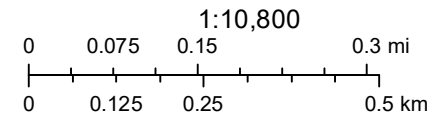
■ A "Very High"

■ B "High"

■ C "Moderate"

■ D "Low"

■ Unknown



County of Santa Cruz



# Tsunami Wet Areas



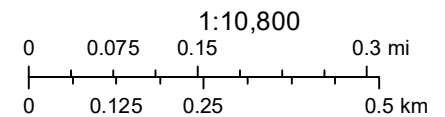
January 6, 2025

## Major Roads

— Major Roads

## Tsunami Wet Areas

■ Tsunami Wet Areas



County of Santa Cruz